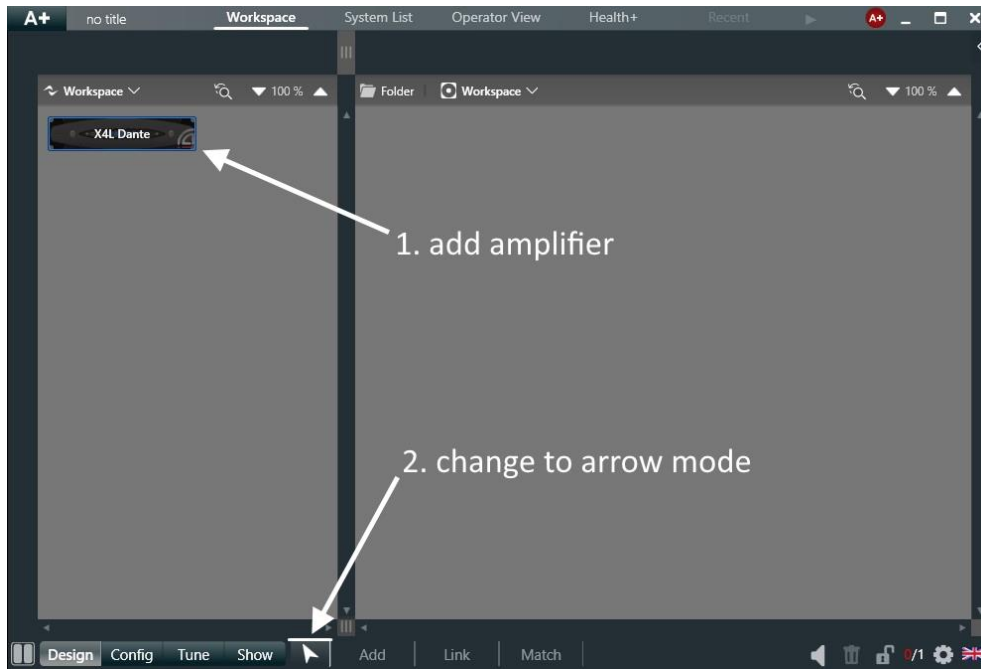
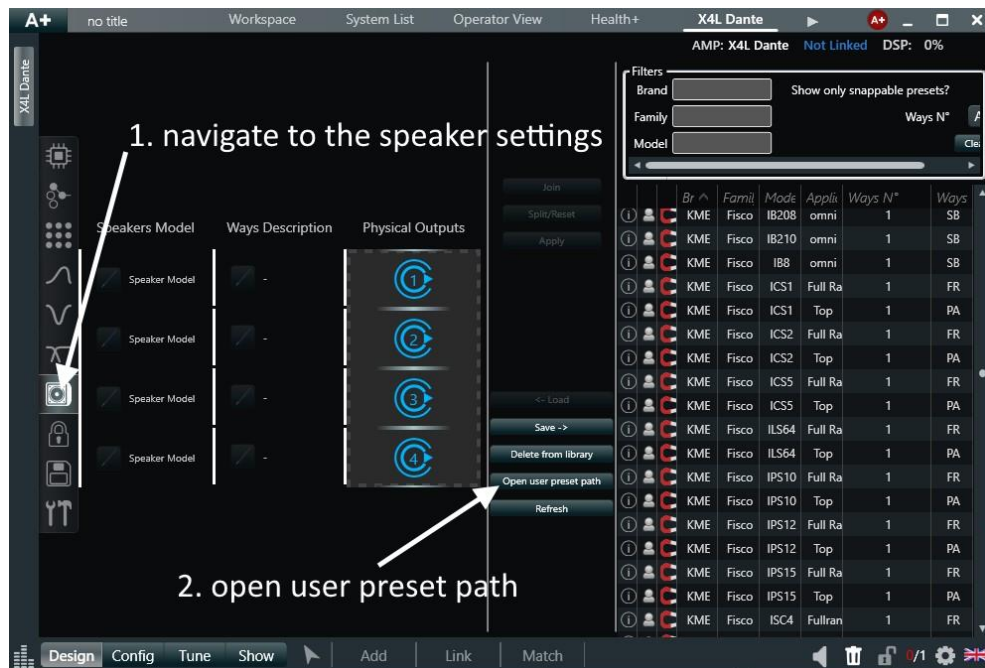


Adding preset into your local preset path

For adding the new presets into your local ArmoniaPlus user preset path, please open the ArmoniaPlus software, add an X-/ Canali- or T-series amplifier and open it by double-clicking the device in arrow mode.



Navigate to the speaker icon on the left side and click Open user preset path in the center of the program window. An explorer window will open where you can paste the new presets.



Copy the preset files from your download folder and paste them in Speakers Library folder.

Once the presets are copied, press the Refresh button in the center of the ArmoniaPlus program window. If operation succeeded, you can find the presets on the main preset list on the right side.